

**“The use of photography in surveying and mapping to ascertain measurements between objects”**

*Oxford English Dictionary (2018)*

## 1 Take photos

These are some of Tom Gower’s pictures of the Tuncurry, taken with a GoPro Hero7 at F/2.8, 1/120 shutter speed, 15mm focal length and ISO’s ranging between 1400 – 1700.



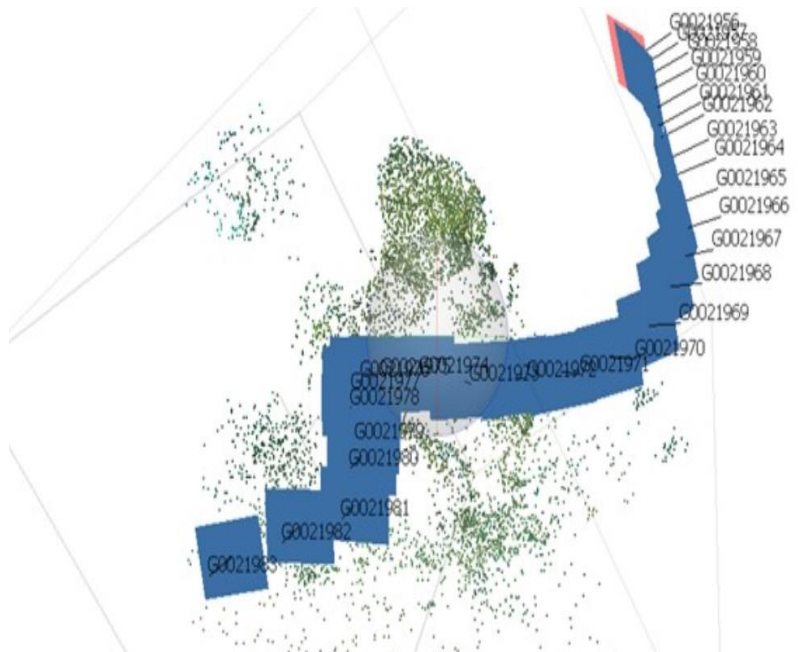
G0021964 G0021966 G0021968 G0021970 G0021972 G0021974 G0021976 G0021978 G002198

## 2 Align photos

Loaded into AgiSoft, “alignment” means the images are processed and plotted on an x,y,z axis.

Each image is mapped against where they were taken, and relative to each other: note the overlap of position.

Just 28 images returned 6,993 data points.



## 3 Build Dense Cloud

Uses the aligned images to generate a depth map for each data point, stitching them together to create this 3D version.

